



# Ocean and Everest Global Financial and investment layout

Everest Chu

Jul 9, 2024





# Catalogue

1. Banking License in Eight Countries
2. Top ten financial value-added transaction services
3. Eight major mineral resources
4. Investment project anchor direction
5. Ocean and Everest Business School cultivates top talents in capital investment
6. The role of the Pacific Financial Center and Trade Center





01

# Banking License in Eight Countries



# Bank licenses from eight countries—apply or acquire

• 01

China



• 02

USA



• 03

India



• 04

French  
Polynesia



• 05

Papua  
New  
Guinea



• 06

Indonesia



• 07

Peru



• 08

South  
Africa





# 02

**Top ten financial  
value-added  
transaction services**



# • Top ten financial value-added transaction services

Stock options trading

Futures trading



Forex trading

Bond trading

Commodity trading

# • Top ten financial value-added transaction services

01

Managed Fund Transactions

02

Private Equity Transactions

03

Venture Capital Transaction

04

Pension Investment Transactions

05

Real Estate Investment Transactions



# 03

## Mineral Resources



# • Energy mineral resources

01

Oil Field



02

LPG



# • Metal Mineral Resources



Copper



Iron



Cobalt



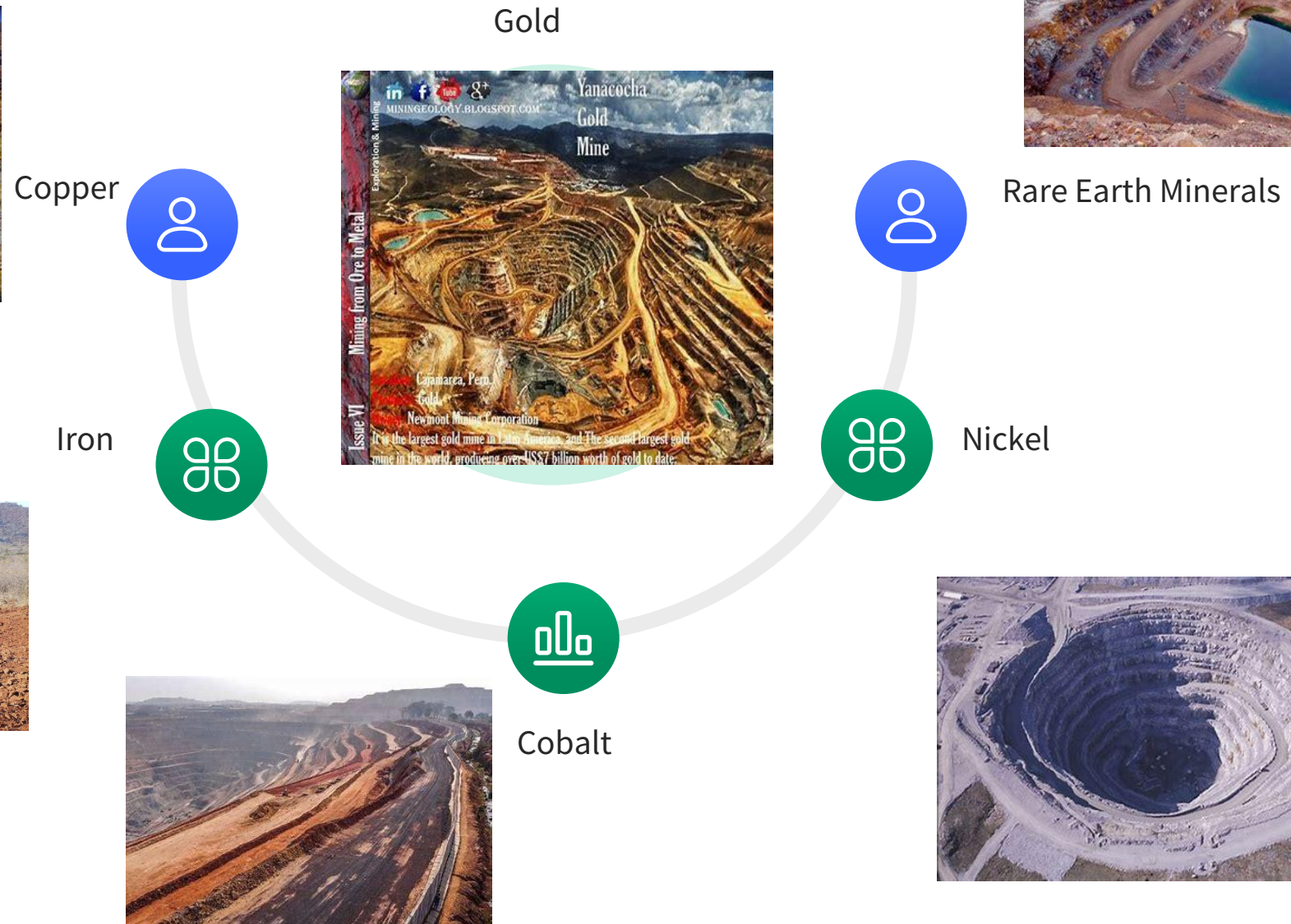
Gold



Rare Earth Minerals



Nickel







# 04

## Investment Project Anchor Direction

# General airport represents the outlet for low-altitude economy

01



02



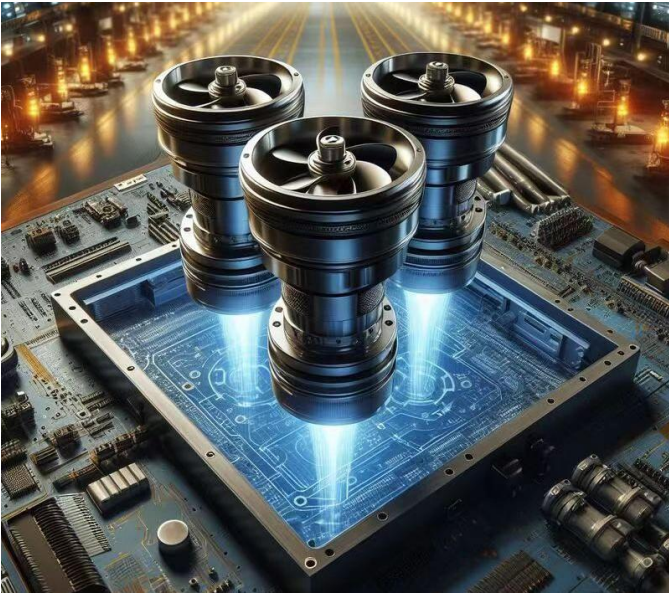
03





# High thrust-to-weight ratio propulsor for light electric aircraft

01



02



03



# Broad Living Building represents environmentally friendly building materials

Environmental protection features of BroadLiving Building





• A comprehensive short video platform, including social networking, live broadcasting, entertainment and e-commerce.





# Films and TV Series Production





# • Pet Project represent loyal companions





- Big health projects focus on everyone's health



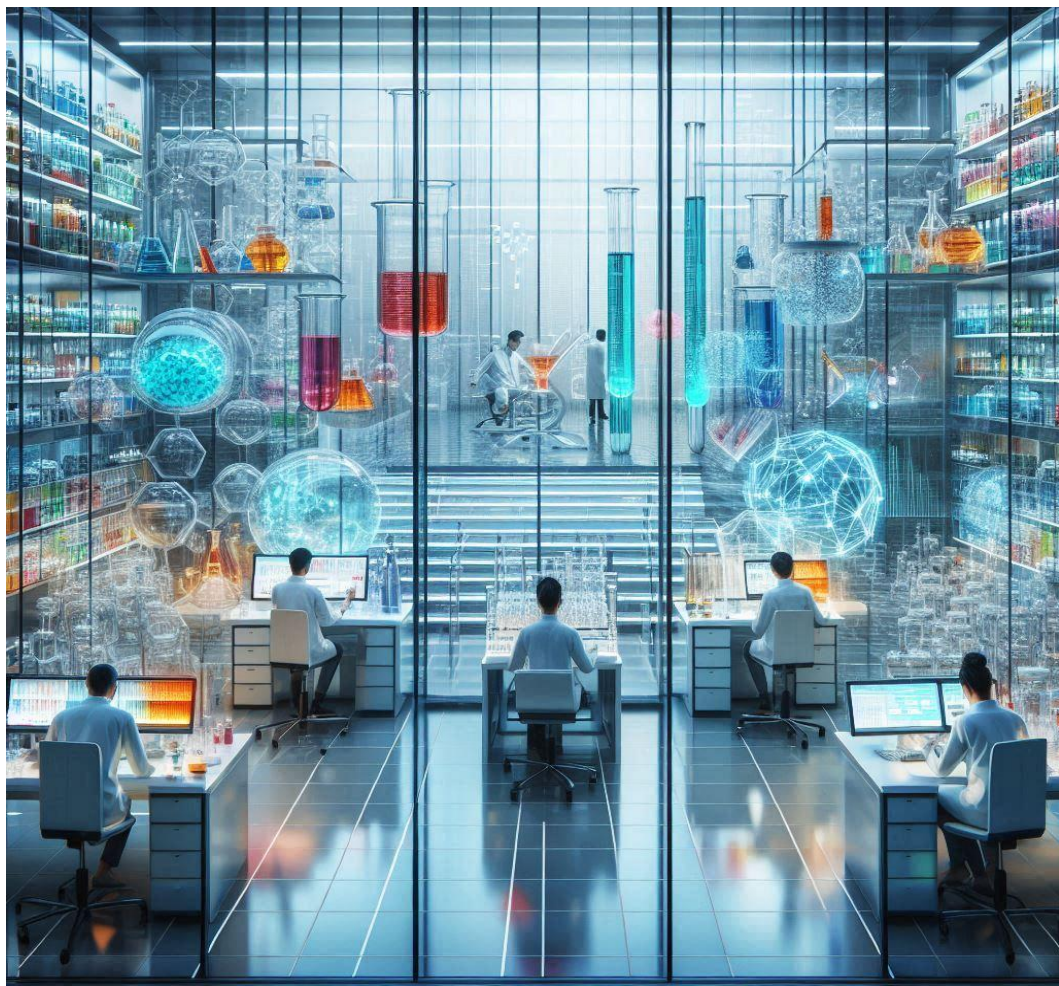


# Wellness projects focus on aging issues





# Pharmaceuticals





# Small berry items represent healthy drinks





- Comprehensive Utilization of Whole Corn Kernels for High Value



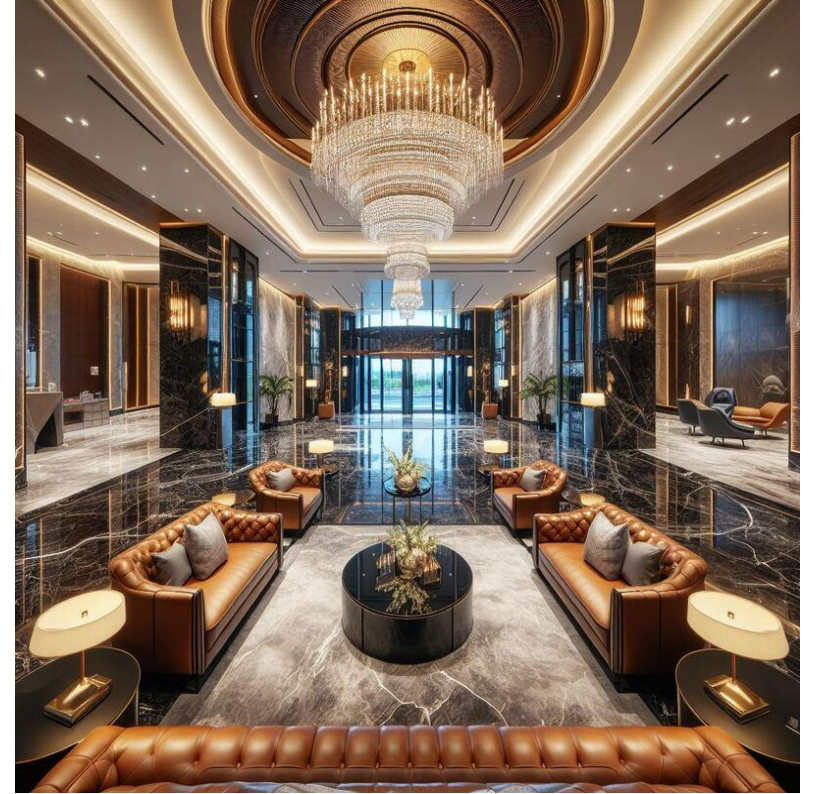


- The mortise and tenon project represents toys that accompany children's growth





# • Tahiti tourist resorts catering to high net worth individuals







# 05

**Ocean and Everest  
Business School  
cultivates top talents  
in capital investment**

# • The Importance of Business Schools in Finance





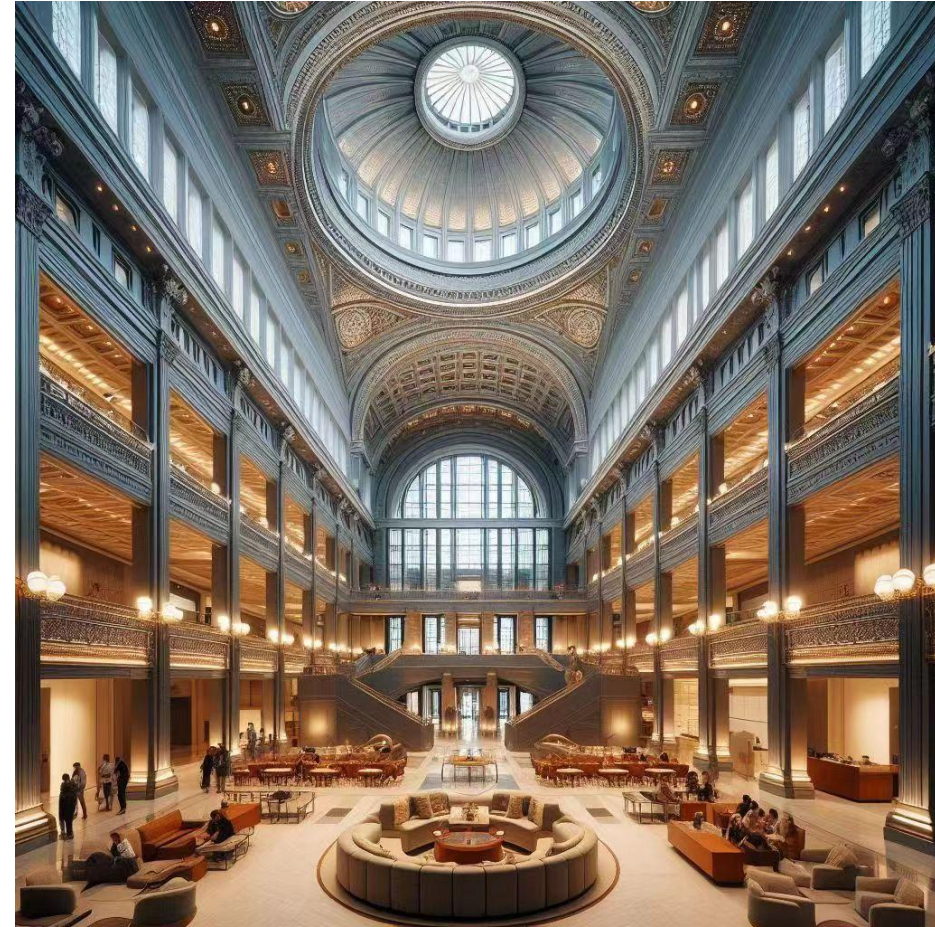
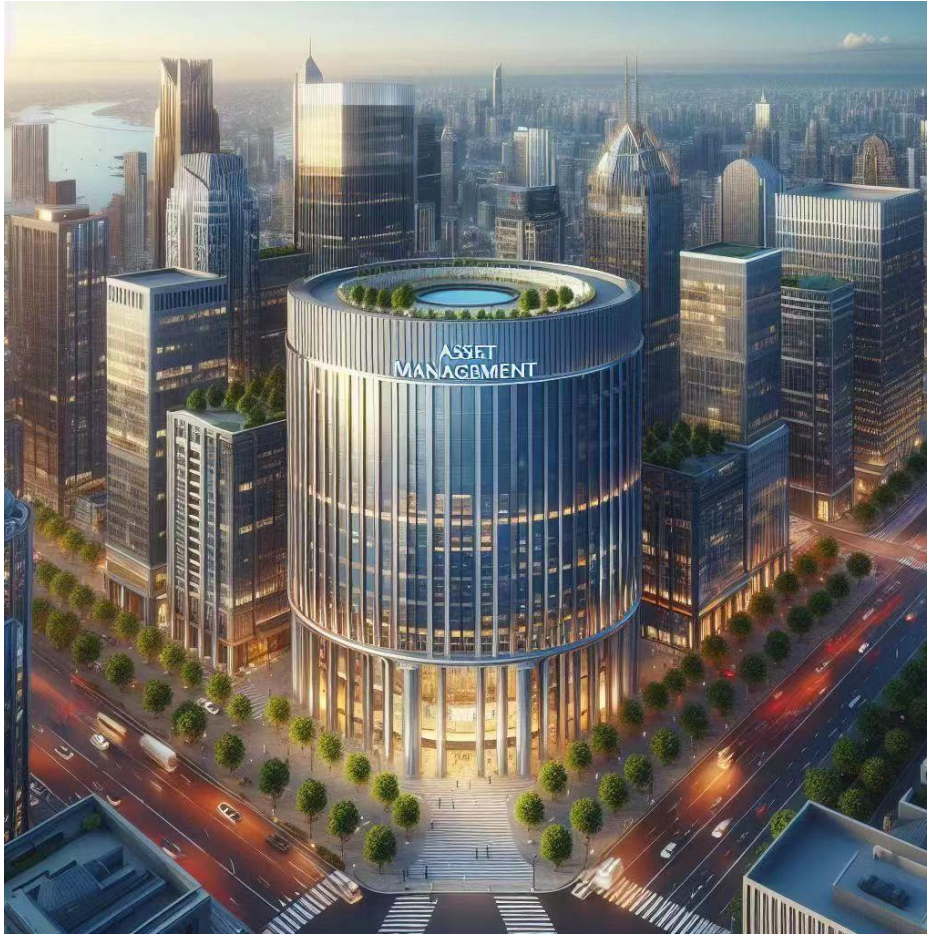


06

The role of the  
Pacific Financial  
Center and Trade  
Center



# A neutral base for financial trade between South American countries and China







# Thank You

Everest Chu

Jul 9, 2024

